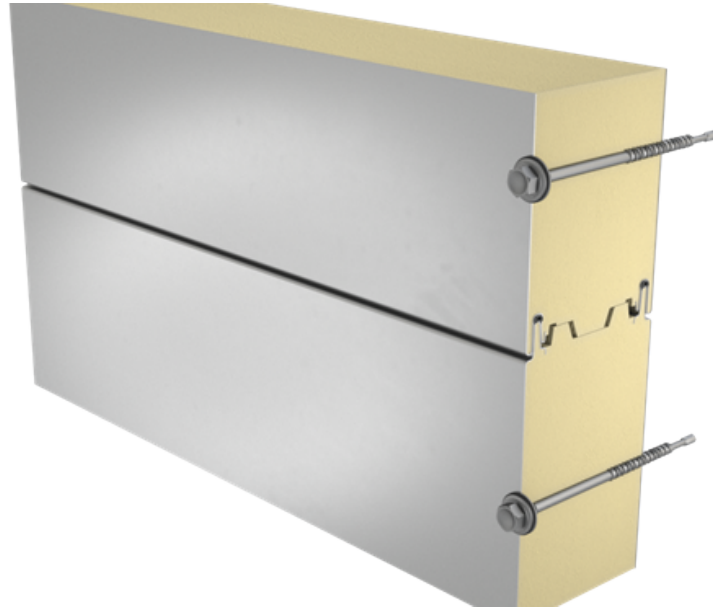


SANDWICH PANEL SP2E PIR UK FOR EXTERNAL WALL



Sandwich panel **SP2E PIR UK** is available in thicknesses 120 - 200 mm.

Low U-value and proper joint design together with wide thickness range make this sandwich panel an ideal solution for cold storage buildings. The panel's excellent quality ensures very good fire resistance properties, thus increasing fire safety of buildings.

The core of this sandwich panel is made of rigid, HCFC-free, self-extinguishing and sustainable polyisocyanurate foam (PIR). Its excellent thermal insulation properties allow for the decrease of panel thickness which transfers directly to lower transportation and assembly costs, as well as significant savings of building's life cycle costs.

Application:

- External walls
- Cold storage

Please contact us to check availability.

The information on our website is accurate to the best of our knowledge and understanding. Although every effort has been made to ensure accuracy, the company cannot accept any responsibility for any direct or indirect damages resulting from possible errors or incorrect application of the information of this publication. We reserve the right to make changes.

PROPERTIES

Model name

Sandwich panel SP2E PIR UK for external wall

Standard module width	1100 mm
Minimum length	2000 mm
Maximum Length	18500 mm
External facing thickness	0.50 mm
Internal facing thickness	0.50 mm

PROPERTIES BY PANEL THICKNESS

Thickness D (mm)	120	140	160	180	200
Weight (kg/m ²)	13.1	13.9	14.6	15.4	16.2
U-value (W/m ² K)	0.18	0.16	0.14	0.12	0.11
Sound insulation Rw (dB)	25	25	25	25	25
Reaction to fire	B-s1, d0	B-s1, d0	B-s1, d0	B-s1, d0	B-s1, d0
Wall fire resistance values & max span horizontal / vertical orientation (m):					
EI 15	7.5 / 7.5	7.5 / 7.5	7.5 / 7.5	7.5 / 7.5	7.5 / 7.5
EI 15 (stainless steel)	7.5 / 7.5	7.5 / 7.5	7.5 / 7.5	7.5 / 7.5	7.5 / 7.5
EI 30	7.5 / 7.5	7.5 / 7.5	7.5 / 7.5	7.5 / 7.5	7.5 / 7.5
EI 30 (stainless steel)	- / 7.5	- / 7.5	- / 7.5	- / 7.5	- / 7.5
EI 60	-	-	-	-	6.0 / 4.0
Ceiling fire resistance values & maximum span lengths (m): stitched joint on upper facing					
EI 15 (inside)	2.8	2.8	2.8	2.8	-

Thickness D (mm)	120	140	160	180	200
EI 30 (inside)	2.0	2.0	2.0	2.0	-

All properties are declared in accordance with EN 14509 and related standards

Changes to sandwich panel fire resistance standards (wall applications)

COATINGS AND COLOURS MATERIALS

Facing	Coating	Corrosivity category	UV resistance	Colours
External	HIARC MAX	C4	Ruv4	RAL7035, RAL9006, RAL9007
External	Polyester	C3	Ruv2-3	RAL1015, RAL3013, RAL5005, RAL6011, RAL7015, RAL7016, RAL7035, RAL9002, RAL9006, RAL9007, RAL9010
Internal	Polyester	C3	-	RAL9002, RAL9010
Internal	PVC laminate *	C4	-	White
Internal	Stainless steel *	C4	-	-

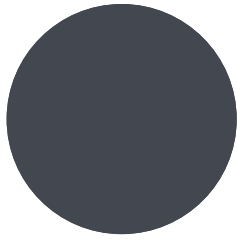
**) optional material*

UV resistance describes how well the coating is able to keep its original colour and gloss levels in accordance with EN10169. The higher the class, the better the resistance.

Corrosivity categories describe the outdoor climate conditions in accordance with EN12944. The higher the category, the more corrosive environment.

Read more about UV-resistance and corrosivity categories.

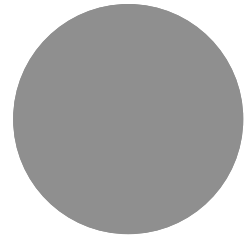
COLOURS



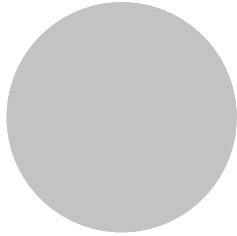
RAL 7015 SLATE GREY



RAL9010 WHITE



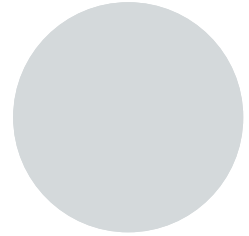
RAL9007 GREY ALUMINIUM



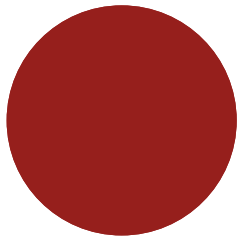
RAL9006 WHITE ALUMINIUM



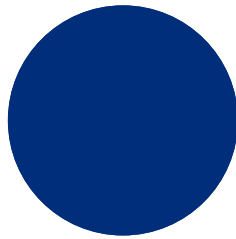
RAL9002 GREY WHITE



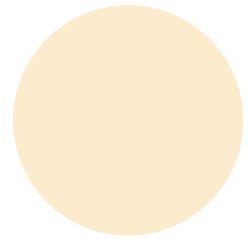
RAL7035 LIGHT GREY



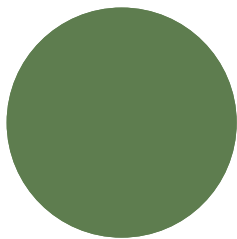
RAL3013 TOMATO RED



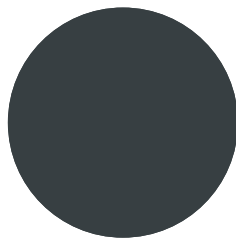
RAL5005 SIGNAL BLUE



RAL1015 LIGHT IVORY

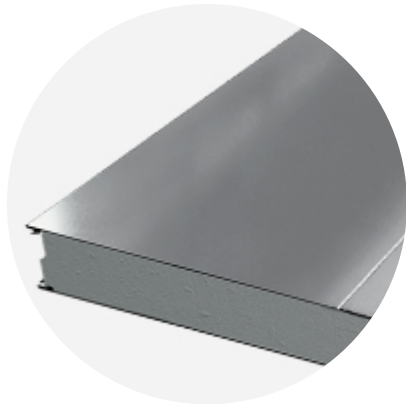


RAL6011 RESEDA GREEN

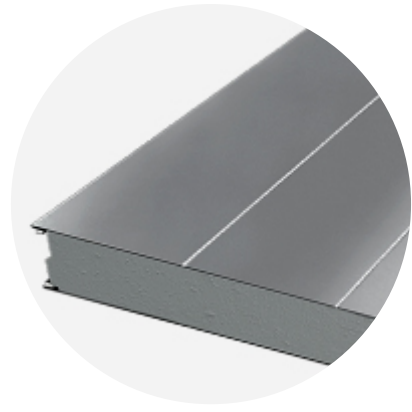


RAL7016 ANTHRACITE GREY

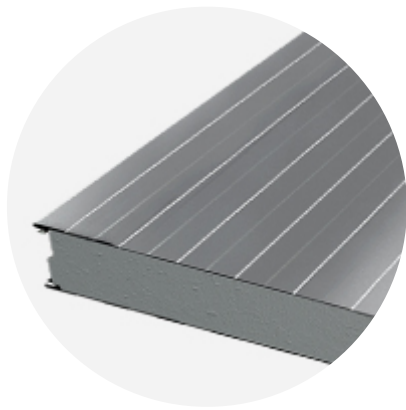
PROFILE OPTIONS



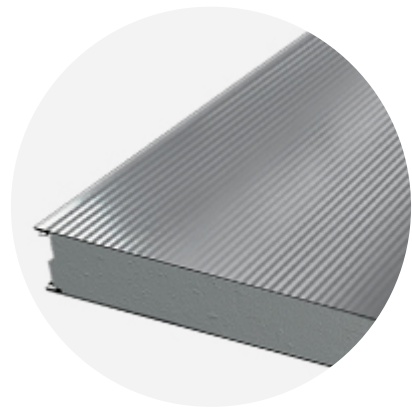
PROFILE OPTION RIB 550



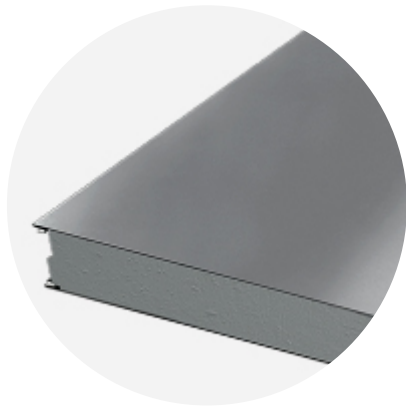
PROFILE OPTION RIB 275



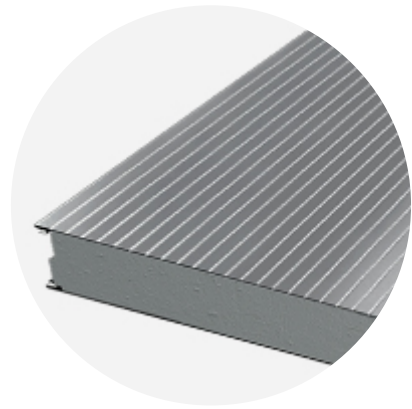
PROFILE OPTION LINEAR



PROFILE OPTION MICRO



PROFILE OPTION FLAT



PROFILE OPTION RIB 28

DESIGN TOOLS

To make both architectural and structural design work easier, with accurate product information in 3D form, we offer a selection of CAD / BIM -objects and software tools, which can be downloaded from the Software Toolbox portal.

READY MODELLED BIM OBJECTS

Download objects for ArchiCAD

Download objects for Revit

SOFTWARE TOOL TRAYPAN FOR CHOOSING THE OPTIMAL PANEL TYPE

User-friendly TrayPan software takes into account load, temperature, span, U-value, fire resistance and acoustics.

TrayPan contains two user interfaces:

- Optimisation tool for quick and easy pre-selection
- Designer version for detailed structural analysis.

Download Traypan

DETAIL DRAWING (.DWG)



05 MAY, 2016

Ruukki-Detail-drawings-SP2E-PU_dwg_en
ZIP, 3.78 MB



05 MAY, 2016

Ruukki-Detail_drawings_SP2B_SP2C_SP2D_PU_en
ZIP, 1.06 MB



05 MAY, 2016

Ruukki-Detail_drawings_SPB_SPC_SP2D_W_en
ZIP, 875.03 KB

LOAD & SPAN TABLES FOR DIMENSIONING PANELS AGAINST LOADS



05 MAY, 2016

Ruukki-load-tables-PU-core
PDF, 391.11 KB



05 MAY, 2016

Ruukki-sandwich-panels-span-tables-agripro-panels
PDF, 387.17 KB



05 MAY, 2016

Ruukki-load-tables-WE-ENG3
PDF, 295.41 KB



05 MAY, 2016

Ruukki-load-tables-W-ENG3
PDF, 315.97 KB



05 MAY, 2016

Ruukki-Sandwich-panels-Span_tables_SPF
PDF, 19.13 KB



05 MAY, 2016

Ruukki-load-tables-PIR-ENG5



PDF, 385.87 KB

ACCESSORIES

Accessories for sandwich panels include flashings, fasteners, gaskets, and sealing flanges.

These accessories ensure fast assembly, fastening reliability, joint tightness, and aesthetic improvement. They are suitable for external and internal wall surface construction, as well as roofs - for construction works of various sizes at any destination.



05 JUL, 2016

Ruukki accessories for sandwich panels 09.07.2015B

PDF, 3.46 MB

INSTRUCTIONS

ASSEMBLY INSTRUCTIONS

Assembly instructions document includes information about:

- Packing
- Transportation and unloading
- Storing
- Assembling



15 FEB, 2017

Appendix-to-assembly-instruction-sandwich-panels

PDF, 12.99 KB



14 JUL, 2016

Ruukki-INOX-guidelines-for-PIR-sandwich-panels

PDF, 315.45 KB



05 MAY, 2016

Ruukki-Sandwich-panels-General_instructions_for_cold_storage_facilities

PDF, 1.58 MB



05 MAY, 2016

Ruukki-Assembly-instruction-for-sandwich-panels-CEE

PDF, 1.10 MB

MAINTENANCE INSTRUCTIONS

Maintenance instructions document contains information about:

- Washing
- Painting



06 MAY, 2016

Ruukki-Colour-coated-steels-Maintenance-instructions
PDF, 600.37 KB



06 MAY, 2016

Ruukki-Maintenance-instructions-powder-coated-facade-claddings
PDF, 602.18 KB

RUUKKI FORMA DESIGN INSTRUCTIONS

Ruukki Forma design instructions explain how to design façade cladding systems on top of Ruukki sandwich panels.



Ruukki Forma design instructions

ORDER FORMS



05 MAY, 2016

Ruukki-Sandwich panels SP2B SP2C SP2D SP2E and SPF order form02082011
XLSX, 53.74 KB

CERTIFICATES & APPROVALS



18 JUL, 2018

Declaration of Performance 41/MW/OBO - mineral wool cored sandwich panels (WEE, WE, WEF, W, WF, WS)
PDF, 209.45 KB

ENVIROMENTAL PRODUCT DECLARATION



05 MAY, 2016

Ruukki-Light-weight-sandwich-element-system
PDF, 5.97 MB